

RF Design and Services  
326 Tryon Road  
Raleigh, North Carolina 27603  
(815) 721-6954  
WWW.TEPGROUP.NET

# Electromagnetic Environment Survey

*Site Name:*

Jemez Springs NM

*Location:*

Jemez Springs, New Mexico

*Prepared for:*

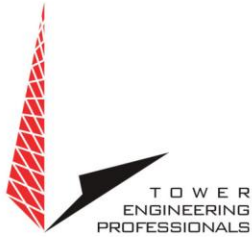
Commnet Wireless L.L.C.

Castle Rock, Colorado

December 17<sup>th</sup>, 2022



Michael W. Hayden NCE CPBE CBNT AMD CPI  
Director, RF Design & Services  
Tower Engineering Professionals



RF Design and Services  
326 Tryon Road  
Raleigh, North Carolina 27603  
(815) 721-6954  
WWW.TEPGROUP.NET

## Contents

DISCLAIMER NOTICE.....	3
INTRODUCTION .....	4
SITE AND FACILITY CONSIDERATIONS.....	4
METHODOLOGY .....	4
MITIGATION RECOMMENDATIONS .....	6
CONCLUSION AND RECOMMENDATIONS .....	6
APPENDIX 1 TOWER PHOTOGRAPH .....	7
APPENDIX 2 TOPOGRAPHIC MAP.....	8
APPENDIX 3 SATELLITE PHOTOGRAPH .....	9
APPENDIX 4A MEASUREMENT DATA (SITE ENTRANCE).....	10
APPENDIX 4B MEASUREMENT DATA (SITE RESIDENCE) .....	11
APPENDIX 4C MEASUREMENT DATA (COMMUNITY PARK PLAYGROUND) .....	12
APPENDIX 4D MEASUREMENT DATA (BODI MAHALA ZEN CENTER) .....	13
APPENDIX 4E MEASUREMENT DATA (CUL-DU-SAC ON CANYON CIRCLE DRIVE).....	14
APPENDIX 4F MEASUREMENT DATA (LAUGHING LIZARD LODGING PARKING LOT).....	15
APPENDIX 4G MEASUREMENT DATA (JEMEZ SPRINGS HISTORICAL SITE) .....	16
APPENDIX 4H MEASUREMENT DATA (JEMEZ SPRINGS DOMESTIC WATER CO-OP) .....	17



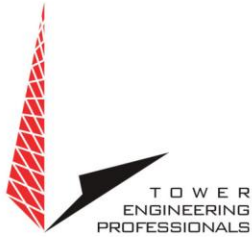
RF Design and Services  
326 Tryon Road  
Raleigh, North Carolina 27603  
(815) 721-6954  
WWW.TEPGROUP.NET

## Disclaimer Notice

This work is based upon our best interpretation of available information. However, these data and their interpretation are constantly changing. Therefore, we do not warrant that any undertaking based on this report will be successful, or that others will not require further research or actions in support of this proposal or future undertaking. In the event of errors, our liability is strictly limited to the replacement of this document with a corrected one. Liability for consequential damages is specifically disclaimed. Any use of this document constitutes an agreement to hold Tower Engineering Professionals and its employees harmless and indemnify it for all liability, claims, demands, and litigation expenses and attorney's fees arising out of such use.

Work product documents released prior to account settlement remain the sole property of Tower Engineering Professionals and must be returned on demand. Underlying work notes and data relating to this document remain the property of Tower Engineering Professionals. This document shall not be reproduced in whole or part without the permission of Tower Engineering Professionals. Any dispute hereunder shall be adjudicated in North Carolina. Any use or retention of this document constitutes acceptance of these terms, the entire work product, and all charges associated therewith.

COPYRIGHT © 2022 BY  
TOWER ENGINEERING PROFESSIONALS  
RALIEGH, NORTH CAROLINA



RF Design and Services  
326 Tryon Road  
Raleigh, North Carolina 27603  
(815) 721-6954  
WWW.TEPGROUP.NET

## **Electromagnetic Environment Survey**

Jemez Springs NM  
Commnet Wireless L.L.C.  
Jemez Springs, New Mexico

### **INTRODUCTION**

RF Design & Services Division of Tower Engineering Professionals (TEP) of Raleigh, North Carolina, has been retained by Commnet Wireless L.L.C. (Commnet) of Castle Rock, Colorado, to audit compliance with Federal Communications Commission (FCC) guidelines for human exposure to radio frequency (RF) energy at various locations in Jemez Springs, NM. This audit was performed to comply with Jemez Springs Village Code 123.34. This audit provides information gathered during a site visit to make measurements of conditions after the updated Commnet/First Alert facilities began operating and includes photographs and annotated architectural drawings, where required.

Site mitigation options have been assessed and recommendations made where the Maximum Permissible Exposure (MPE) could be exceeded in accessible areas.

### **SITE AND FACILITY CONSIDERATIONS**

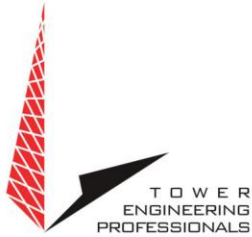
Site Jemez Springs NM is located at 17816 Highway 4 in Jemez Springs, NM at coordinates 35.771535, -106.688797. The structure is a 62' monopole. There are four levels of antennae on this tower with centers of radiation as described below:

1. Commnet Panels @ 60'
2. AT&T/FirstNet Panels @ 48'
3. Emergency Services Dipole Array @ 30'
4. Emergency Services Yagi @ 11'

A photograph of the Jemez Springs NM tower may be found in Appendix 1, Tower Photograph.

### **METHODOLOGY**

TEP personnel conducted field verification of existing antenna locations and made site measurements of all existing RF contributions to the site on December 14<sup>th</sup>, 2022. Measurements were performed using a NARDA model 550 broadband field meter, serial number F-0223, with a shaped isotropic probe, model EA5091, serial number 01150. This system is considered an "industry standard" for making EME measurements.



Measurements were taken as a percent of MPE for the General Population/Uncontrolled standard over a 30 minute period as specified in FCC OET-65.

Six locations, as specified by the Jemez Springs Mayor, were evaluated. These locations are as follows:

- Community Park Playground
- Bodi Mahala Zen Center
- Cul-Du-Sac on Canyon Circle Drive
- Jemez Springs Domestic Water Co-Op (South)
- Jemez Historical Site (North)

In addition to the specified locations, the following locations were also evaluated:

- Entrance to site Jemez Springs NM
- In front of the residence located on the site property

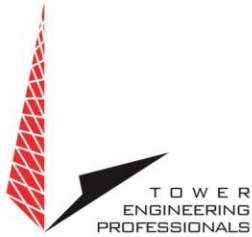
A topographic map of the measurement locations may be found in Appendix 2, Topographic Map. A satellite photo of the measurement locations may be found in Appendix 3, Satellite Photograph.

The FCC guidelines define two separate tiers of exposure limits. As defined by the FCC, these limits are:

**General population/uncontrolled exposure.** For FCC purposes, applies to human exposure to RF fields when the general public is exposed or in which persons who are exposed as a consequence of their employment may not be made fully aware of the potential for exposure or cannot exercise control over their exposure. Therefore, members of the general public always fall under this category when exposure is not employment related.

**Occupational/controlled exposure.** For FCC purposes, applies to human exposure to RF fields when persons are exposed as a consequence of their employment and in which those persons who are exposed have been made fully aware of the potential for exposure and can exercise control over their exposure.

Measurement data may be found in Appendix 4, Measurement Data.



RF Design and Services  
326 Tryon Road  
Raleigh, North Carolina 27603  
(815) 721-6954  
WWW.TEPGROUP.NET

## MITIGATION RECOMMENDATIONS

Based on the results of the measurement activity, **No** mitigation is required at any of the measurement locations.

## CONCLUSION AND RECOMMENDATIONS

- This Commnet site **IS** in compliance with the current FCC RF human exposure regulations as outlined in FCC OET-65.
- TEP recommends that any worker attempting to service this antenna facility have RF awareness training and wear a personal RF monitor.
- TEP recommends placement of RF signage in accordance with Commnet RF signage policy.
- Procedures described in OET Bulletin-65 should be followed during the performance of work on the antenna facilities.



CORPORATE OFFICE  
326 TRYON ROAD  
RALEIGH, NC 27607  
919.661.6351  
WWW.TEPGROUP.NET

## Appendix 1 Tower Photograph

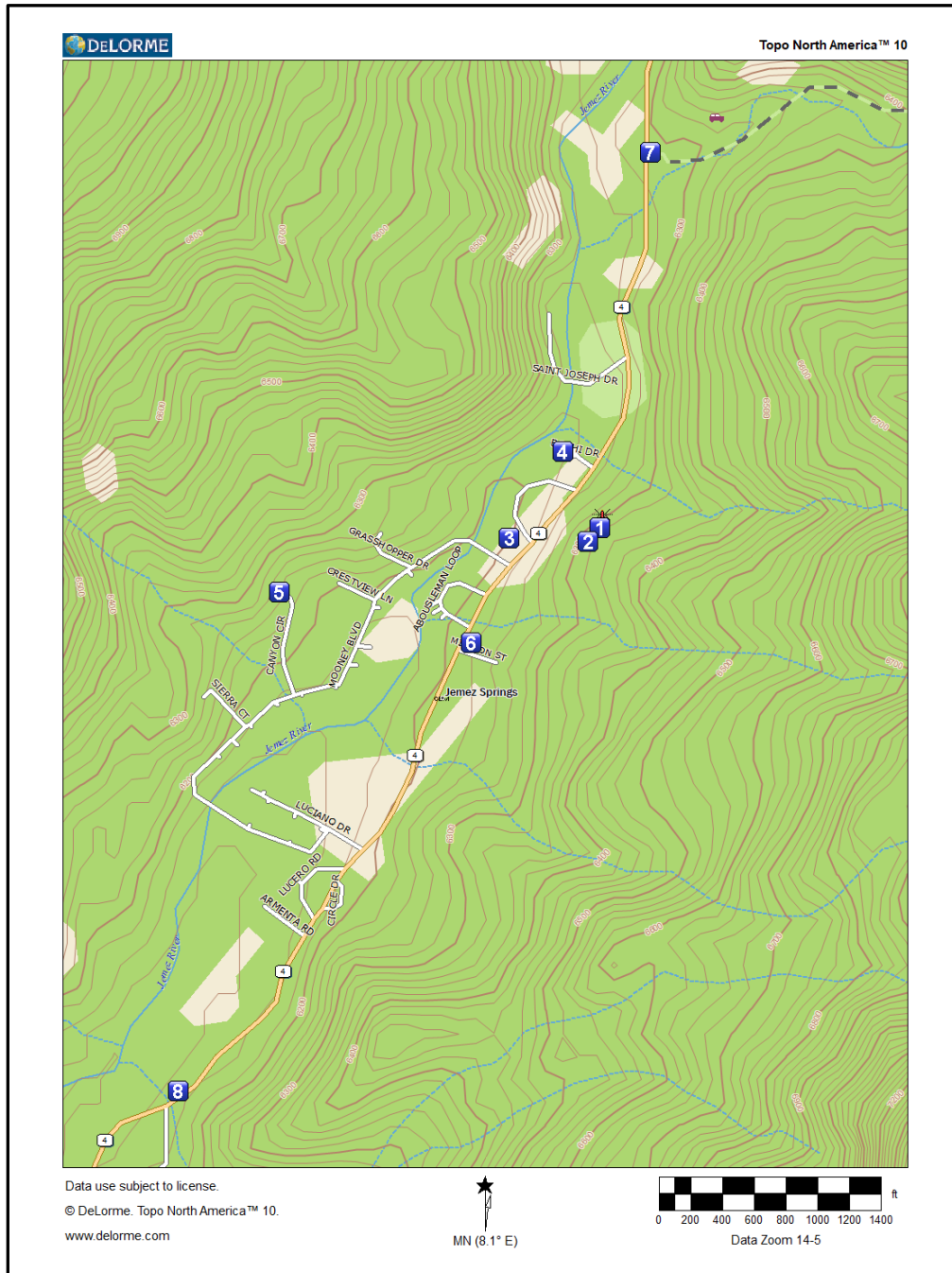






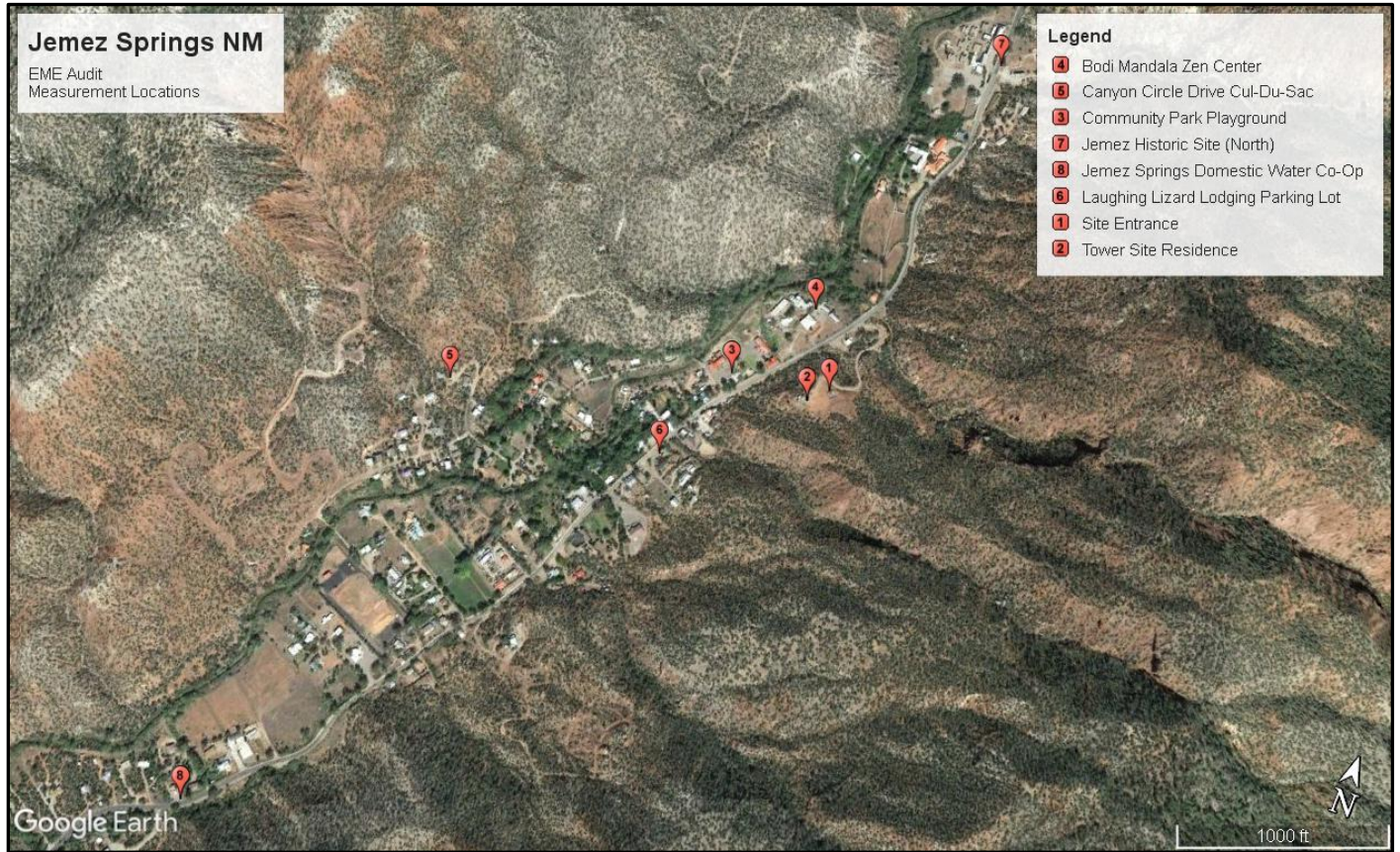
CORPORATE OFFICE  
326 TRYON ROAD  
RALEIGH, NC 27607  
919.661.6351  
WWW.TEPGROUP.NET

## Appendix 2 Topographic Map





### Appendix 3 Satellite Photograph





CORPORATE OFFICE  
326 TRYON ROAD  
RALEIGH, NC 27607  
919.661.6351  
WWW.TEPGROUP.NET

## Appendix 4a Measurement Data (Site Entrance)

This page intentionally blank



**Instrument / Site**

<b>Meter</b>	<b>Probe</b>	<b>Engineer</b>
<b>Model: NBM-550</b> <b>S/N: F-0223</b>	<b>Model: EA5091</b> <b>S/N: 01182</b>	<b>M. W. Hayden</b>
<b>Calibration Due Date</b> <b>06/10/2023</b>	<b>Calibration Due Date</b> <b>06/12/2023</b>	

<b>Site</b>	<b>Coordinates</b>
<b>Jemez Springs NM</b>	<b>35.77156</b> <b>-106.68889</b>

<b>Comment</b>
<b>Measurement Location #1</b> <b>Site Entrance</b>



### Measured Values

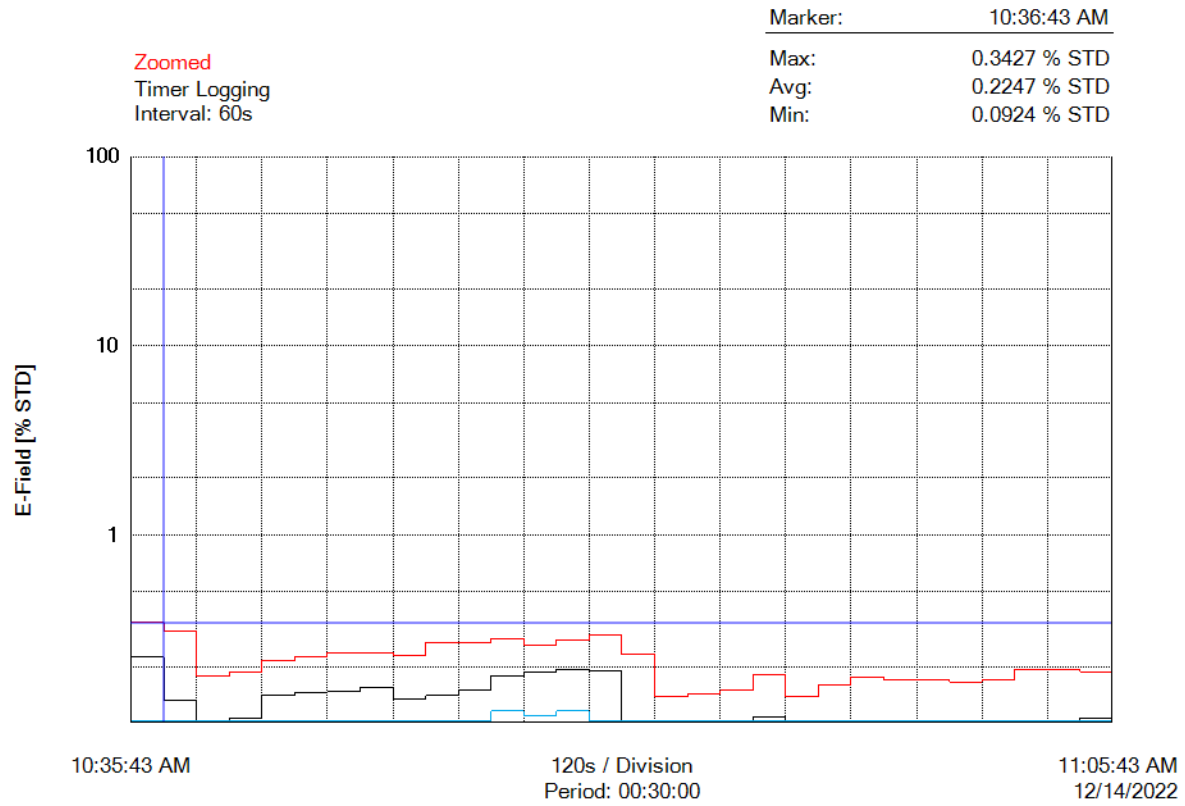
**Zoomed**

Timer: Start Time 10:35:43 AM, Period 0h 30' 0", Interval 60s

Index	Date/Time	Zero	Max (E-Field)	Avg (E-Field)	Min (E-Field)
1	12/14/2022 10:36:43 AM		0.3427 % STD	0.2247 % STD	0.0924 % STD
2	12/14/2022 10:37:43 AM		0.3072 % STD	0.1333 % STD	0.0000 % STD
3	12/14/2022 10:38:43 AM		0.1784 % STD	0.0794 % STD	0.0000 % STD
4	12/14/2022 10:39:43 AM		0.1879 % STD	0.1057 % STD	0.0055 % STD
5	12/14/2022 10:40:43 AM		0.2155 % STD	0.1415 % STD	0.0718 % STD
6	12/14/2022 10:41:43 AM		0.2266 % STD	0.1450 % STD	0.0608 % STD
7	12/14/2022 10:42:43 AM		0.2376 % STD	0.1472 % STD	0.0608 % STD
8	12/14/2022 10:43:43 AM		0.2376 % STD	0.1551 % STD	0.0663 % STD
9	12/14/2022 10:44:43 AM		0.2285 % STD	0.1355 % STD	0.0553 % STD
10	12/14/2022 10:45:43 AM		0.2671 % STD	0.1401 % STD	0.0497 % STD
11	12/14/2022 10:46:43 AM		0.2695 % STD	0.1504 % STD	0.0608 % STD
12	12/14/2022 10:47:43 AM		0.2820 % STD	0.1786 % STD	0.1160 % STD
13	12/14/2022 10:48:43 AM		0.2597 % STD	0.1860 % STD	0.1105 % STD
14	12/14/2022 10:49:43 AM		0.2764 % STD	0.1928 % STD	0.1160 % STD
15	12/14/2022 10:50:43 AM		0.2928 % STD	0.1898 % STD	0.0829 % STD
16	12/14/2022 10:51:43 AM	!	0.2321 % STD	0.0865 % STD	0.0000 % STD
17	12/14/2022 10:52:43 AM		0.1381 % STD	0.0498 % STD	0.0000 % STD
18	12/14/2022 10:53:43 AM		0.1437 % STD	0.0618 % STD	0.0000 % STD
19	12/14/2022 10:54:43 AM		0.1492 % STD	0.0773 % STD	0.0000 % STD
20	12/14/2022 10:55:43 AM		0.1823 % STD	0.1083 % STD	0.0000 % STD
21	12/14/2022 10:56:43 AM		0.1381 % STD	0.0632 % STD	0.0000 % STD
22	12/14/2022 10:57:43 AM		0.1602 % STD	0.0786 % STD	0.0000 % STD
23	12/14/2022 10:58:43 AM		0.1768 % STD	0.0889 % STD	0.0000 % STD
24	12/14/2022 10:59:43 AM		0.1713 % STD	0.0881 % STD	0.0000 % STD
25	12/14/2022 11:00:43 AM		0.1713 % STD	0.0705 % STD	0.0000 % STD
26	12/14/2022 11:01:43 AM		0.1658 % STD	0.0831 % STD	0.0000 % STD
27	12/14/2022 11:02:43 AM		0.1713 % STD	0.1026 % STD	0.0221 % STD
28	12/14/2022 11:03:43 AM		0.1934 % STD	0.1014 % STD	0.0000 % STD
29	12/14/2022 11:04:43 AM		0.1934 % STD	0.0950 % STD	0.0221 % STD
30	12/14/2022 11:05:43 AM		0.1879 % STD	0.1065 % STD	0.0387 % STD



### Graph







## Images

---









### Parameters

Operating Mode	HIGH FREQUENCY
Number of Sub-Indices	30
Storing Date	12/14/2022
Storing Time	10:35:43 AM
Dataset Type	TIM
Voice Comment Available	NO
Dataset Fine Type	T1
GPS Flag	NO
Device Product Name	NBM-550
Device Serial Number	F-0223
Device Cal Due Date	06/10/2023
Probe Product Name	EA5091
Probe Serial Number	01182
Probe Cal Due Date	06/12/2023
Probe Field Type	E
Probe Connection Type	C
Probe Lower Frequency Limit A	300 kHz
Probe Upper Frequency Limit A	50 GHz
Probe Lower Frequency Limit B	300 kHz
Probe Upper Frequency Limit B	50 GHz
Probe Emin A	4.340 V/m
Probe Emax A	150.0 V/m
Probe Emin B	4.340 V/m
Probe Emax B	150.0 V/m
Shaped Probe	YES
Standard ID	1
Standard Name	FCC96-326,occ
Apply Standard	OFF
Frequency	300 MHz
Apply Correction Frequency	OFF
Eref_E(f)	1.000 V/m
Eref_H(f)	1.000 V/m
Combi Probe Use	E_H
Unit	mW/cm <sup>2</sup>
Results Format	FIXED
Auto-Zero Interval	15 min
Result Type	-
Averaging Time	-
Average Progress	-
Spatial AVG Mode	-
Store Condition	-
Storing Range	-
Cond. Stop Time	-
Upper Threshold	-
Lower Threshold	-
Timer Interval	60 sec
Timer Duration	00:30:00
History Time Scale	-
Time progress of current segment	-



CORPORATE OFFICE  
326 TRYON ROAD  
RALEIGH, NC 27607  
919.661.6351  
WWW.TEPGROUP.NET

## Appendix 4b Measurement Data (On-Site Residence)

This page intentionally blank



**Instrument / Site**

<b>Meter</b>	<b>Probe</b>	<b>Engineer</b>
<b>Model: NBM-550</b> <b>S/N: F-0223</b>	<b>Model: EA5091</b> <b>S/N: 01182</b>	<b>M. W. Hayden</b>
<b>Calibration Due Date</b> <b>06/10/2023</b>	<b>Calibration Due Date</b> <b>06/12/2023</b>	

<b>Site</b>	<b>Coordinates</b>
<b>Jemez Springs NM</b>	<b>35.771156</b> <b>-106.68889</b>

<b>Comment</b>
<b>Measurement Location #2</b> <b>On-site Residence</b>



### Measured Values

---

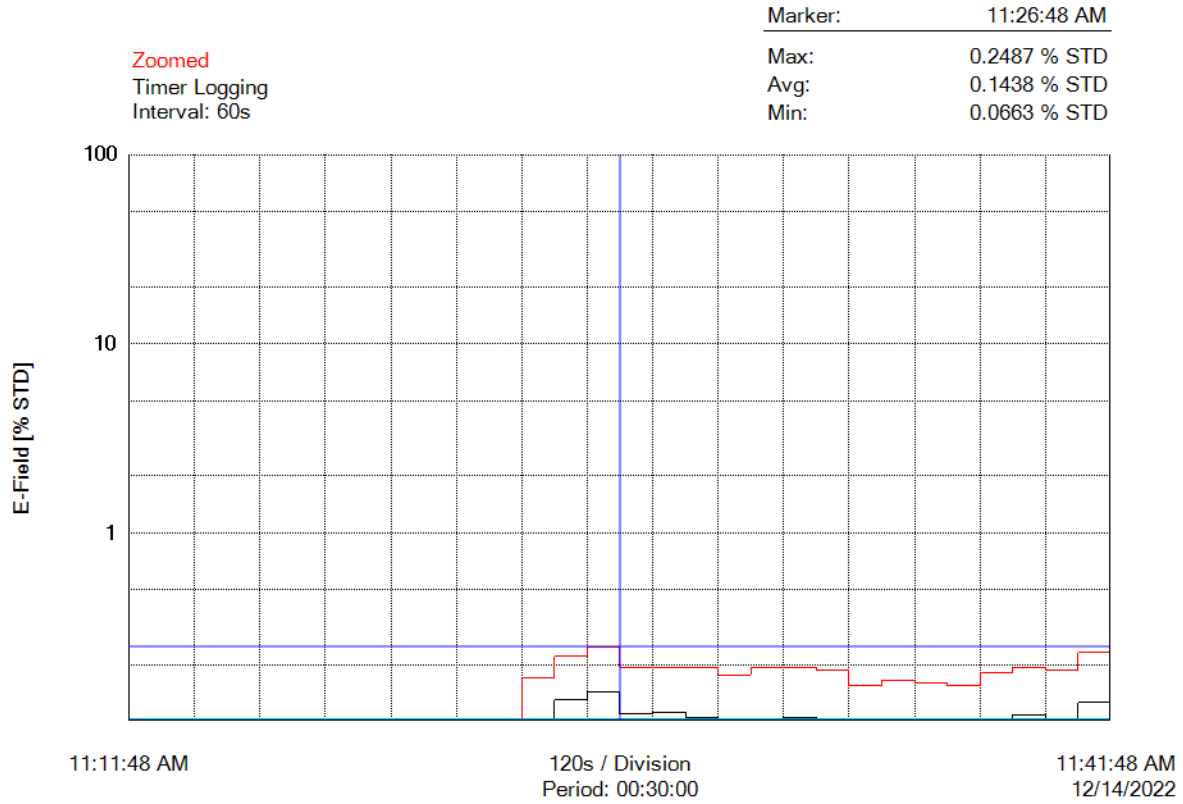
**Zoomed**

Timer: Start Time 11:11:48 AM, Period 0h 30' 0", Interval 60s

<u>Index</u>	<u>Date/Time</u>	<u>Zero</u>	<u>Max (E-Field)</u>	<u>Avg (E-Field)</u>	<u>Min (E-Field)</u>
1	12/14/2022 11:12:48 AM		0.0663 % STD	0.0078 % STD	0.0000 % STD
2	12/14/2022 11:13:48 AM		0.0773 % STD	0.0015 % STD	0.0000 % STD
3	12/14/2022 11:14:48 AM		0.0497 % STD	0.0019 % STD	0.0000 % STD
4	12/14/2022 11:15:48 AM		0.0332 % STD	0.0003 % STD	0.0000 % STD
5	12/14/2022 11:16:48 AM		0.0276 % STD	0.0007 % STD	0.0000 % STD
6	12/14/2022 11:17:48 AM		0.0553 % STD	0.0032 % STD	0.0000 % STD
7	12/14/2022 11:18:48 AM		0.0608 % STD	0.0057 % STD	0.0000 % STD
8	12/14/2022 11:19:48 AM		0.0884 % STD	0.0069 % STD	0.0000 % STD
9	12/14/2022 11:20:48 AM		0.0773 % STD	0.0062 % STD	0.0000 % STD
10	12/14/2022 11:21:48 AM		0.0553 % STD	0.0010 % STD	0.0000 % STD
11	12/14/2022 11:22:48 AM		0.0497 % STD	0.0012 % STD	0.0000 % STD
12	12/14/2022 11:23:48 AM		0.0221 % STD	0.0002 % STD	0.0000 % STD
13	12/14/2022 11:24:48 AM	!	0.1713 % STD	0.0844 % STD	0.0000 % STD
14	12/14/2022 11:25:48 AM		0.2210 % STD	0.1298 % STD	0.0387 % STD
15	12/14/2022 11:26:48 AM		0.2487 % STD	0.1438 % STD	0.0663 % STD
16	12/14/2022 11:27:48 AM		0.1934 % STD	0.1094 % STD	0.0221 % STD
17	12/14/2022 11:28:48 AM		0.1934 % STD	0.1121 % STD	0.0166 % STD
18	12/14/2022 11:29:48 AM		0.1934 % STD	0.1055 % STD	0.0221 % STD
19	12/14/2022 11:30:48 AM		0.1768 % STD	0.0868 % STD	0.0000 % STD
20	12/14/2022 11:31:48 AM		0.1934 % STD	0.0911 % STD	0.0166 % STD
21	12/14/2022 11:32:48 AM		0.1934 % STD	0.1052 % STD	0.0332 % STD
22	12/14/2022 11:33:48 AM		0.1879 % STD	0.1004 % STD	0.0110 % STD
23	12/14/2022 11:34:48 AM		0.1547 % STD	0.0548 % STD	0.0000 % STD
24	12/14/2022 11:35:48 AM		0.1658 % STD	0.0777 % STD	0.0000 % STD
25	12/14/2022 11:36:48 AM		0.1602 % STD	0.0626 % STD	0.0000 % STD
26	12/14/2022 11:37:48 AM		0.1547 % STD	0.0771 % STD	0.0000 % STD
27	12/14/2022 11:38:48 AM		0.1823 % STD	0.0895 % STD	0.0000 % STD
28	12/14/2022 11:39:48 AM	!	0.1934 % STD	0.1089 % STD	0.0387 % STD
29	12/14/2022 11:40:48 AM		0.1879 % STD	0.0958 % STD	0.0000 % STD
30	12/14/2022 11:41:48 AM		0.2321 % STD	0.1264 % STD	0.0387 % STD



### Graph





## Images

---





## Parameters

---

Operating Mode	HIGH FREQUENCY
Number of Sub-Indices	30
Storing Date	12/14/2022
Storing Time	11:11:48 AM
Dataset Type	TIM
Voice Comment Available	NO
Dataset Fine Type	T1
GPS Flag	NO
Device Product Name	NBM-550
Device Serial Number	F-0223
Device Cal Due Date	06/10/2023
Probe Product Name	EA5091
Probe Serial Number	01182
Probe Cal Due Date	06/12/2023
Probe Field Type	E
Probe Connection Type	C
Probe Lower Frequency Limit A	300 kHz
Probe Upper Frequency Limit A	50 GHz
Probe Lower Frequency Limit B	300 kHz
Probe Upper Frequency Limit B	50 GHz
Probe Emin A	4.340 V/m
Probe Emax A	150.0 V/m
Probe Emin B	4.340 V/m
Probe Emax B	150.0 V/m
Shaped Probe	YES
Standard ID	1
Standard Name	FCC96-326,occ
Apply Standard	OFF
Frequency	300 MHz
Apply Correction Frequency	OFF
Eref_E(f)	1.000 V/m
Eref_H(f)	1.000 V/m
Combi Probe Use	E_H
Unit	mW/cm <sup>2</sup>
Results Format	FIXED
Auto-Zero Interval	15 min
Result Type	-
Averaging Time	-
Average Progress	-
Spatial AVG Mode	-
Store Condition	-
Storing Range	-
Cond. Stop Time	-
Upper Threshold	-
Lower Threshold	-
Timer Interval	60 sec
Timer Duration	00:30:00
History Time Scale	-
Time progress of current segment	-





CORPORATE OFFICE  
326 TRYON ROAD  
RALEIGH, NC 27607  
919.661.6351  
WWW.TEPGROUP.NET

## Appendix 4c Measurement Data (Community Park Playground)

This page intentionally blank



**Instrument / Site**

<b>Meter</b>	<b>Probe</b>	<b>Engineer</b>
<b>Model: NBM-550</b> <b>S/N: F-0223</b>	<b>Model: EA5091</b> <b>S/N: 01182</b>	<b>M. W. Hayden</b>
<b>Calibration Due Date</b> <b>06/10/2023</b>	<b>Calibration Due Date</b> <b>06/12/2023</b>	

<b>Site</b>	<b>Coordinates</b>
<b>Jemez Springs NM</b>	<b>35.77137</b> <b>-106.69079</b>

<b>Comment</b>
<b>Measurement Location #3</b> <b>Community Park Playground</b>



### Measured Values

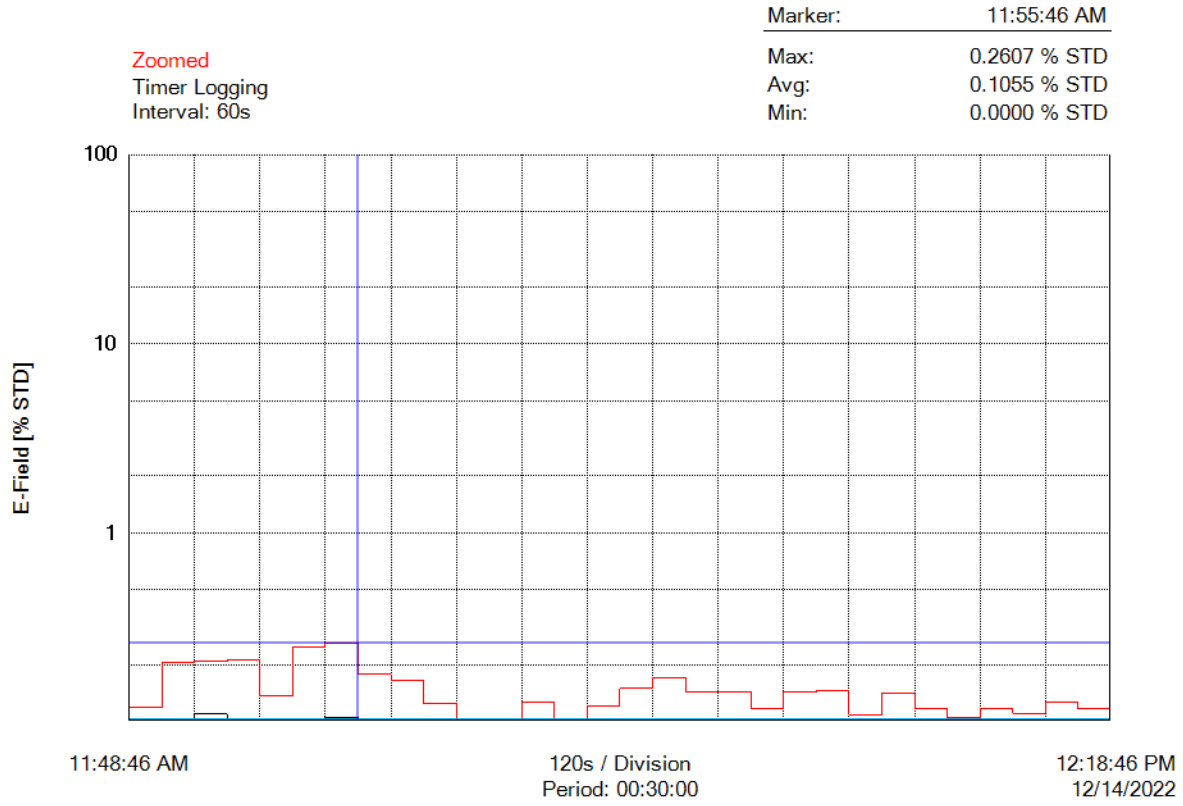
**Zoomed**

Timer: Start Time 11:48:46 AM, Period 0h 30' 0", Interval 60s

Index	Date/Time	Zero	Max (E-Field)	Avg (E-Field)	Min (E-Field)
1	12/14/2022 11:49:46 AM		0.1184 % STD	0.0316 % STD	0.0000 % STD
2	12/14/2022 11:50:46 AM		0.2065 % STD	0.0643 % STD	0.0000 % STD
3	12/14/2022 11:51:46 AM		0.2077 % STD	0.1090 % STD	0.0000 % STD
4	12/14/2022 11:52:46 AM		0.2133 % STD	0.0998 % STD	0.0000 % STD
5	12/14/2022 11:53:46 AM		0.1363 % STD	0.0577 % STD	0.0000 % STD
6	12/14/2022 11:54:46 AM		0.2488 % STD	0.0781 % STD	0.0000 % STD
7	12/14/2022 11:55:46 AM		0.2607 % STD	0.1055 % STD	0.0000 % STD
8	12/14/2022 11:56:46 AM		0.1777 % STD	0.1031 % STD	0.0118 % STD
9	12/14/2022 11:57:46 AM		0.1659 % STD	0.0671 % STD	0.0000 % STD
10	12/14/2022 11:58:46 AM		0.1244 % STD	0.0306 % STD	0.0000 % STD
11	12/14/2022 11:59:46 AM		0.0869 % STD	0.0046 % STD	0.0000 % STD
12	12/14/2022 12:00:46 PM		0.0711 % STD	0.0112 % STD	0.0000 % STD
13	12/14/2022 12:01:46 PM	!	0.1271 % STD	0.0348 % STD	0.0000 % STD
14	12/14/2022 12:02:46 PM		0.0939 % STD	0.0281 % STD	0.0000 % STD
15	12/14/2022 12:03:46 PM		0.1215 % STD	0.0326 % STD	0.0000 % STD
16	12/14/2022 12:04:46 PM		0.1492 % STD	0.0493 % STD	0.0000 % STD
17	12/14/2022 12:05:46 PM		0.1713 % STD	0.0703 % STD	0.0000 % STD
18	12/14/2022 12:06:46 PM		0.1437 % STD	0.0594 % STD	0.0000 % STD
19	12/14/2022 12:07:46 PM		0.1437 % STD	0.0559 % STD	0.0000 % STD
20	12/14/2022 12:08:46 PM		0.1160 % STD	0.0293 % STD	0.0000 % STD
21	12/14/2022 12:09:46 PM		0.1437 % STD	0.0451 % STD	0.0000 % STD
22	12/14/2022 12:10:46 PM		0.1457 % STD	0.0437 % STD	0.0000 % STD
23	12/14/2022 12:11:46 PM		0.1086 % STD	0.0247 % STD	0.0000 % STD
24	12/14/2022 12:12:46 PM		0.1405 % STD	0.0219 % STD	0.0000 % STD
25	12/14/2022 12:13:46 PM		0.1160 % STD	0.0312 % STD	0.0000 % STD
26	12/14/2022 12:14:46 PM		0.1050 % STD	0.0422 % STD	0.0000 % STD
27	12/14/2022 12:15:46 PM		0.1160 % STD	0.0416 % STD	0.0000 % STD
28	12/14/2022 12:16:46 PM	!	0.1105 % STD	0.0471 % STD	0.0000 % STD
29	12/14/2022 12:17:46 PM		0.1271 % STD	0.0336 % STD	0.0000 % STD
30	12/14/2022 12:18:46 PM		0.1160 % STD	0.0397 % STD	0.0000 % STD



### Graph





## Images





## Parameters

---

<i>Operating Mode</i>	<i>HIGH FREQUENCY</i>
<i>Number of Sub-Indices</i>	30
<i>Storing Date</i>	12/14/2022
<i>Storing Time</i>	11:48:46 AM
<i>Dataset Type</i>	TIM
<i>Voice Comment Available</i>	NO
<i>Dataset Fine Type</i>	T1
<i>GPS Flag</i>	NO
<i>Device Product Name</i>	NBM-550
<i>Device Serial Number</i>	F-0223
<i>Device Cal Due Date</i>	06/10/2023
<i>Probe Product Name</i>	EA5091
<i>Probe Serial Number</i>	01182
<i>Probe Cal Due Date</i>	06/12/2023
<i>Probe Field Type</i>	E
<i>Probe Connection Type</i>	C
<i>Probe Lower Frequency Limit A</i>	300 kHz
<i>Probe Upper Frequency Limit A</i>	50 GHz
<i>Probe Lower Frequency Limit B</i>	300 kHz
<i>Probe Upper Frequency Limit B</i>	50 GHz
<i>Probe Emin A</i>	4.340 V/m
<i>Probe Emax A</i>	150.0 V/m
<i>Probe Emin B</i>	4.340 V/m
<i>Probe Emax B</i>	150.0 V/m
<i>Shaped Probe</i>	YES
<i>Standard ID</i>	1
<i>Standard Name</i>	FCC96-326,occ
<i>Apply Standard</i>	OFF
<i>Frequency</i>	300 MHz
<i>Apply Correction Frequency</i>	OFF
<i>Eref_E(f)</i>	1.000 V/m
<i>Eref_H(f)</i>	1.000 V/m
<i>Combi Probe Use</i>	E_H
<i>Unit</i>	mW/cm <sup>2</sup>
<i>Results Format</i>	FIXED
<i>Auto-Zero Interval</i>	15 min
<i>Result Type</i>	-
<i>Averaging Time</i>	-
<i>Average Progress</i>	-
<i>Spatial AVG Mode</i>	-
<i>Store Condition</i>	-
<i>Storing Range</i>	-
<i>Cond. Stop Time</i>	-
<i>Upper Threshold</i>	-
<i>Lower Threshold</i>	-
<i>Timer Interval</i>	60 sec
<i>Timer Duration</i>	00:30:00
<i>History Time Scale</i>	-
<i>Time progress of current segment</i>	-



CORPORATE OFFICE  
326 TRYON ROAD  
RALEIGH, NC 27607  
919.661.6351  
WWW.TEPGROUP.NET

## Appendix 4d Measurement Data (Bodi Mahala Zen Center)

This page intentionally blank





**Instrument / Site**

<b>Meter</b>	<b>Probe</b>	<b>Engineer</b>
<b>Model: NBM-550</b> <b>S/N: F-0223</b>	<b>Model: EA5091</b> <b>S/N: 01182</b>	<b>M. W. Hayden</b>
<b>Calibration Due Date</b> <b>06/10/2023</b>	<b>Calibration Due Date</b> <b>06/12/2023</b>	

<b>Site</b>	<b>Coordinates</b>
<b>Jemez Springs NM</b>	<b>35.77278</b> <b>-106.68966</b>

<b>Comment</b>
<b>Measurement Location #4</b> <b>Bodi Mahala Zen Center</b>



### Measured Values

**Zoomed**

Timer: Start Time 12:26:08 PM, Period 0h 30' 0", Interval 60s

Index	Date/Time	Zero	Max (E-Field)	Avg (E-Field)	Min (E-Field)
1	12/14/2022 12:27:08 PM		0.0497 % STD	0.0046 % STD	0.0000 % STD
2	12/14/2022 12:28:08 PM		0.0055 % STD	0.0000 % STD	0.0000 % STD
3	12/14/2022 12:29:08 PM		0.0000 % STD	0.0000 % STD	0.0000 % STD
4	12/14/2022 12:30:08 PM		0.0055 % STD	0.0000 % STD	0.0000 % STD
5	12/14/2022 12:31:08 PM		0.0000 % STD	0.0000 % STD	0.0000 % STD
6	12/14/2022 12:32:08 PM		0.0055 % STD	0.0000 % STD	0.0000 % STD
7	12/14/2022 12:33:08 PM		0.0055 % STD	0.0000 % STD	0.0000 % STD
8	12/14/2022 12:34:08 PM		0.0718 % STD	0.0010 % STD	0.0000 % STD
9	12/14/2022 12:35:08 PM		0.0000 % STD	0.0000 % STD	0.0000 % STD
10	12/14/2022 12:36:08 PM		0.0055 % STD	0.0000 % STD	0.0000 % STD
11	12/14/2022 12:37:08 PM		0.0110 % STD	0.0001 % STD	0.0000 % STD
12	12/14/2022 12:38:08 PM	!	0.1160 % STD	0.0309 % STD	0.0000 % STD
13	12/14/2022 12:39:08 PM		0.0829 % STD	0.0171 % STD	0.0000 % STD
14	12/14/2022 12:40:08 PM		0.1160 % STD	0.0319 % STD	0.0000 % STD
15	12/14/2022 12:41:08 PM		0.0884 % STD	0.0158 % STD	0.0000 % STD
16	12/14/2022 12:42:08 PM		0.0884 % STD	0.0087 % STD	0.0000 % STD
17	12/14/2022 12:43:08 PM		0.0994 % STD	0.0071 % STD	0.0000 % STD
18	12/14/2022 12:44:08 PM		0.0829 % STD	0.0040 % STD	0.0000 % STD
19	12/14/2022 12:45:08 PM		0.0497 % STD	0.0026 % STD	0.0000 % STD
20	12/14/2022 12:46:08 PM		0.0773 % STD	0.0071 % STD	0.0000 % STD
21	12/14/2022 12:47:08 PM		0.0884 % STD	0.0257 % STD	0.0000 % STD
22	12/14/2022 12:48:08 PM		0.0994 % STD	0.0204 % STD	0.0000 % STD
23	12/14/2022 12:49:08 PM		0.0994 % STD	0.0212 % STD	0.0000 % STD
24	12/14/2022 12:50:08 PM		0.0608 % STD	0.0067 % STD	0.0000 % STD
25	12/14/2022 12:51:08 PM		0.1050 % STD	0.0124 % STD	0.0000 % STD
26	12/14/2022 12:52:08 PM		0.1050 % STD	0.0247 % STD	0.0000 % STD
27	12/14/2022 12:53:08 PM	!	0.1437 % STD	0.0353 % STD	0.0000 % STD
28	12/14/2022 12:54:08 PM		0.1381 % STD	0.0580 % STD	0.0000 % STD
29	12/14/2022 12:55:08 PM		0.1492 % STD	0.0464 % STD	0.0000 % STD
30	12/14/2022 12:56:08 PM		0.1050 % STD	0.0306 % STD	0.0000 % STD





## Images





## Parameters

---

<i>Operating Mode</i>	<i>HIGH FREQUENCY</i>
<i>Number of Sub-Indices</i>	30
<i>Storing Date</i>	12/14/2022
<i>Storing Time</i>	12:26:08 PM
<i>Dataset Type</i>	TIM
<i>Voice Comment Available</i>	NO
<i>Dataset Fine Type</i>	T1
<i>GPS Flag</i>	NO
<i>Device Product Name</i>	NBM-550
<i>Device Serial Number</i>	F-0223
<i>Device Cal Due Date</i>	06/10/2023
<i>Probe Product Name</i>	EA5091
<i>Probe Serial Number</i>	01182
<i>Probe Cal Due Date</i>	06/12/2023
<i>Probe Field Type</i>	E
<i>Probe Connection Type</i>	C
<i>Probe Lower Frequency Limit A</i>	300 kHz
<i>Probe Upper Frequency Limit A</i>	50 GHz
<i>Probe Lower Frequency Limit B</i>	300 kHz
<i>Probe Upper Frequency Limit B</i>	50 GHz
<i>Probe Emin A</i>	4.340 V/m
<i>Probe Emax A</i>	150.0 V/m
<i>Probe Emin B</i>	4.340 V/m
<i>Probe Emax B</i>	150.0 V/m
<i>Shaped Probe</i>	YES
<i>Standard ID</i>	1
<i>Standard Name</i>	FCC96-326,occ
<i>Apply Standard</i>	OFF
<i>Frequency</i>	300 MHz
<i>Apply Correction Frequency</i>	OFF
<i>Eref_E(f)</i>	1.000 V/m
<i>Eref_H(f)</i>	1.000 V/m
<i>Combi Probe Use</i>	E_H
<i>Unit</i>	mW/cm <sup>2</sup>
<i>Results Format</i>	FIXED
<i>Auto-Zero Interval</i>	15 min
<i>Result Type</i>	-
<i>Averaging Time</i>	-
<i>Average Progress</i>	-
<i>Spatial AVG Mode</i>	-
<i>Store Condition</i>	-
<i>Storing Range</i>	-
<i>Cond. Stop Time</i>	-
<i>Upper Threshold</i>	-
<i>Lower Threshold</i>	-
<i>Timer Interval</i>	60 sec
<i>Timer Duration</i>	00:30:00
<i>History Time Scale</i>	-
<i>Time progress of current segment</i>	-



CORPORATE OFFICE  
326 TRYON ROAD  
RALEIGH, NC 27607  
919.661.6351  
WWW.TEPGROUP.NET

## Appendix 4e Measurement Data (Cul-Du-Sac on Canyon Circle Drive)

This page intentionally blank



**Instrument / Site**

<b>Meter</b>	<b>Probe</b>	<b>Engineer</b>
<b>Model: NBM-550</b> <b>S/N: F-0223</b>	<b>Model: EA5091</b> <b>S/N: 01182</b>	<b>M. W. Hayden</b>
<b>Calibration Due Date</b> <b>06/10/2023</b>	<b>Calibration Due Date</b> <b>06/12/2023</b>	

<b>Site</b>	<b>Coordinates</b>
<b>Jemez Springs NM</b>	<b>35.77046</b> <b>-106.69573</b>

<b>Comment</b>
<b>Measurement Location #5</b> <b>Cul-Du-Sac on Canyon Circle Drive</b>





**Measured Values**

**Zoomed**

Timer: Start Time 01:06:06 PM, Period 0h 30' 0", Interval 60s

<b>Index</b>	<b>Date/Time</b>	<b>Zero</b>	<b>Max (E-Field)</b>	<b>Avg (E-Field)</b>	<b>Min (E-Field)</b>
1	12/14/2022 01:07:06 PM		0.0166 % STD	0.0003 % STD	0.0000 % STD
2	12/14/2022 01:08:06 PM		0.0355 % STD	0.0003 % STD	0.0000 % STD
3	12/14/2022 01:09:06 PM		0.1007 % STD	0.0177 % STD	0.0000 % STD
4	12/14/2022 01:10:06 PM		0.0770 % STD	0.0099 % STD	0.0000 % STD
5	12/14/2022 01:11:06 PM		0.0948 % STD	0.0083 % STD	0.0000 % STD
6	12/14/2022 01:12:06 PM		0.0000 % STD	0.0000 % STD	0.0000 % STD
7	12/14/2022 01:13:06 PM		0.0000 % STD	0.0000 % STD	0.0000 % STD
8	12/14/2022 01:14:06 PM		0.0000 % STD	0.0000 % STD	0.0000 % STD
9	12/14/2022 01:15:06 PM		0.0000 % STD	0.0000 % STD	0.0000 % STD
10	12/14/2022 01:16:06 PM		0.0000 % STD	0.0000 % STD	0.0000 % STD
11	12/14/2022 01:17:06 PM		0.0000 % STD	0.0000 % STD	0.0000 % STD
12	12/14/2022 01:18:06 PM	!	0.0663 % STD	0.0038 % STD	0.0000 % STD
13	12/14/2022 01:19:06 PM		0.0553 % STD	0.0018 % STD	0.0000 % STD
14	12/14/2022 01:20:06 PM		0.0387 % STD	0.0010 % STD	0.0000 % STD
15	12/14/2022 01:21:06 PM		0.0387 % STD	0.0007 % STD	0.0000 % STD
16	12/14/2022 01:22:06 PM		0.0497 % STD	0.0004 % STD	0.0000 % STD
17	12/14/2022 01:23:06 PM		0.0442 % STD	0.0016 % STD	0.0000 % STD
18	12/14/2022 01:24:06 PM		0.0166 % STD	0.0002 % STD	0.0000 % STD
19	12/14/2022 01:25:06 PM		0.0387 % STD	0.0003 % STD	0.0000 % STD
20	12/14/2022 01:26:06 PM		0.0221 % STD	0.0001 % STD	0.0000 % STD
21	12/14/2022 01:27:06 PM		0.0000 % STD	0.0000 % STD	0.0000 % STD
22	12/14/2022 01:28:06 PM		0.0000 % STD	0.0000 % STD	0.0000 % STD
23	12/14/2022 01:29:06 PM		0.0000 % STD	0.0000 % STD	0.0000 % STD
24	12/14/2022 01:30:06 PM		0.0889 % STD	0.0073 % STD	0.0000 % STD
25	12/14/2022 01:31:06 PM		0.0296 % STD	0.0009 % STD	0.0000 % STD
26	12/14/2022 01:32:06 PM		0.0221 % STD	0.0002 % STD	0.0000 % STD
27	12/14/2022 01:33:06 PM	!	0.0663 % STD	0.0061 % STD	0.0000 % STD
28	12/14/2022 01:34:06 PM		0.0608 % STD	0.0073 % STD	0.0000 % STD
29	12/14/2022 01:35:06 PM		0.0829 % STD	0.0065 % STD	0.0000 % STD
30	12/14/2022 01:36:06 PM		0.0497 % STD	0.0042 % STD	0.0000 % STD





## Images

---





## Parameters

---

<i>Operating Mode</i>	<i>HIGH FREQUENCY</i>
<i>Number of Sub-Indices</i>	30
<i>Storing Date</i>	12/14/2022
<i>Storing Time</i>	01:06:06 PM
<i>Dataset Type</i>	TIM
<i>Voice Comment Available</i>	NO
<i>Dataset Fine Type</i>	T1
<i>GPS Flag</i>	NO
<i>Device Product Name</i>	NBM-550
<i>Device Serial Number</i>	F-0223
<i>Device Cal Due Date</i>	06/10/2023
<i>Probe Product Name</i>	EA5091
<i>Probe Serial Number</i>	01182
<i>Probe Cal Due Date</i>	06/12/2023
<i>Probe Field Type</i>	E
<i>Probe Connection Type</i>	C
<i>Probe Lower Frequency Limit A</i>	300 kHz
<i>Probe Upper Frequency Limit A</i>	50 GHz
<i>Probe Lower Frequency Limit B</i>	300 kHz
<i>Probe Upper Frequency Limit B</i>	50 GHz
<i>Probe Emin A</i>	4.340 V/m
<i>Probe Emax A</i>	150.0 V/m
<i>Probe Emin B</i>	4.340 V/m
<i>Probe Emax B</i>	150.0 V/m
<i>Shaped Probe</i>	YES
<i>Standard ID</i>	1
<i>Standard Name</i>	FCC96-326,occ
<i>Apply Standard</i>	OFF
<i>Frequency</i>	300 MHz
<i>Apply Correction Frequency</i>	OFF
<i>Eref_E(f)</i>	1.000 V/m
<i>Eref_H(f)</i>	1.000 V/m
<i>Combi Probe Use</i>	E_H
<i>Unit</i>	mW/cm <sup>2</sup>
<i>Results Format</i>	FIXED
<i>Auto-Zero Interval</i>	15 min
<i>Result Type</i>	-
<i>Averaging Time</i>	-
<i>Average Progress</i>	-
<i>Spatial AVG Mode</i>	-
<i>Store Condition</i>	-
<i>Storing Range</i>	-
<i>Cond. Stop Time</i>	-
<i>Upper Threshold</i>	-
<i>Lower Threshold</i>	-
<i>Timer Interval</i>	60 sec
<i>Timer Duration</i>	00:30:00
<i>History Time Scale</i>	-
<i>Time progress of current segment</i>	-



CORPORATE OFFICE  
326 TRYON ROAD  
RALEIGH, NC 27607  
919.661.6351  
WWW.TEPGROUP.NET

## Appendix 4f Measurement Data (Laughing Lizard Lodging Parking Lot)

This page intentionally blank



**Instrument / Site**

<b>Meter</b>	<b>Probe</b>	<b>Engineer</b>
<b>Model: NBM-550</b> <b>S/N: F-0223</b>	<b>Model: EA5091</b> <b>S/N: 01182</b>	<b>M. W. Hayden</b>
<b>Calibration Due Date</b> <b>06/10/2023</b>	<b>Calibration Due Date</b> <b>06/12/2023</b>	

<b>Site</b>	<b>Coordinates</b>
<b>Jemez Springs NM</b>	<b>35.76959</b> <b>-106.69165</b>

<b>Comment</b>
<b>Measurement Location #6</b> <b>Laughing Lizard Lodging Parking Lot</b>



### Measured Values

**Zoomed**

Timer: Start Time 02:19:49 PM, Period 0h 27' 0", Interval 60s

Index	Date/Time	Zero	Max (E-Field)	Avg (E-Field)	Min (E-Field)
1	12/14/2022 02:20:49 PM		0.2666 % STD	0.0665 % STD	0.0000 % STD
2	12/14/2022 02:21:49 PM		0.0166 % STD	0.0003 % STD	0.0000 % STD
3	12/14/2022 02:22:49 PM		0.0773 % STD	0.0041 % STD	0.0000 % STD
4	12/14/2022 02:23:49 PM		0.1007 % STD	0.0150 % STD	0.0000 % STD
5	12/14/2022 02:24:49 PM		0.1363 % STD	0.0240 % STD	0.0000 % STD
6	12/14/2022 02:25:49 PM		0.1896 % STD	0.0598 % STD	0.0000 % STD
7	12/14/2022 02:26:49 PM		0.0861 % STD	0.0075 % STD	0.0000 % STD
8	12/14/2022 02:27:49 PM		0.0884 % STD	0.0116 % STD	0.0000 % STD
9	12/14/2022 02:28:49 PM		0.0608 % STD	0.0045 % STD	0.0000 % STD
10	12/14/2022 02:29:49 PM		0.1271 % STD	0.0171 % STD	0.0000 % STD
11	12/14/2022 02:30:49 PM		0.1160 % STD	0.0244 % STD	0.0000 % STD
12	12/14/2022 02:31:49 PM	!	0.0939 % STD	0.0177 % STD	0.0000 % STD
13	12/14/2022 02:32:49 PM		0.0884 % STD	0.0101 % STD	0.0000 % STD
14	12/14/2022 02:33:49 PM		0.0497 % STD	0.0038 % STD	0.0000 % STD
15	12/14/2022 02:34:49 PM		0.0884 % STD	0.0179 % STD	0.0000 % STD
16	12/14/2022 02:35:49 PM		0.1050 % STD	0.0134 % STD	0.0000 % STD
17	12/14/2022 02:36:49 PM		0.0442 % STD	0.0023 % STD	0.0000 % STD
18	12/14/2022 02:37:49 PM		0.0608 % STD	0.0045 % STD	0.0000 % STD
19	12/14/2022 02:38:49 PM		0.0994 % STD	0.0073 % STD	0.0000 % STD
20	12/14/2022 02:39:49 PM		0.0663 % STD	0.0047 % STD	0.0000 % STD
21	12/14/2022 02:40:49 PM		0.0718 % STD	0.0071 % STD	0.0000 % STD
22	12/14/2022 02:41:49 PM		0.0829 % STD	0.0138 % STD	0.0000 % STD
23	12/14/2022 02:42:49 PM		0.1105 % STD	0.0259 % STD	0.0000 % STD
24	12/14/2022 02:43:49 PM		0.0829 % STD	0.0157 % STD	0.0000 % STD
25	12/14/2022 02:44:49 PM		0.0939 % STD	0.0156 % STD	0.0000 % STD
26	12/14/2022 02:45:49 PM		0.0939 % STD	0.0137 % STD	0.0000 % STD
27	12/14/2022 02:46:49 PM	!	0.0718 % STD	0.0054 % STD	0.0000 % STD







*Images*

---





## Parameters

---

Operating Mode	HIGH FREQUENCY
Number of Sub- Indices	27
Storing Date	12/14/2022
Storing Time	02:19:49 PM
Dataset Type	TIM
Voice Comment Available	NO
Dataset Fine Type	T1
GPS Flag	NO
Device Product Name	NBM-550
Device Serial Number	F-0223
Device Cal Due Date	06/10/2023
Probe Product Name	EA5091
Probe Serial Number	01182
Probe Cal Due Date	06/12/2023
Probe Field Type	E
Probe Connection Type	C
Probe Lower Frequency Limit A	300 kHz
Probe Upper Frequency Limit A	50 GHz
Probe Lower Frequency Limit B	300 kHz
Probe Upper Frequency Limit B	50 GHz
Probe Emin A	4.340 V/m
Probe Emax A	150.0 V/m
Probe Emin B	4.340 V/m
Probe Emax B	150.0 V/m
Shaped Probe	YES
Standard ID	1
Standard Name	FCC96-326,occ
Apply Standard	OFF
Frequency	300 MHz
Apply Correction Frequency	OFF
Eref_E(f)	1.000 V/m
Eref_H(f)	1.000 V/m
Combi Probe Use	E_H
Unit	mW/cm <sup>2</sup>
Results Format	FIXED
Auto-Zero Interval	15 min
Result Type	-
Averaging Time	-
Average Progress	-
Spatial AVG Mode	-
Store Condition	-
Storing Range	-
Cond. Stop Time	-
Upper Threshold	-
Lower Threshold	-
Timer Interval	60 sec
Timer Duration	00:30:00
History Time Scale	-
Time progress of current segment	-



CORPORATE OFFICE  
326 TRYON ROAD  
RALEIGH, NC 27607  
919.661.6351  
WWW.TEPGROUP.NET

## Appendix 4g Measurement Data (Jemez Springs Historical Site)

This page intentionally blank



**Instrument / Site**

<b>Meter</b>	<b>Probe</b>	<b>Engineer</b>
<b>Model: NBM-550</b> <b>S/N: F-0223</b>	<b>Model: EA5091</b> <b>S/N: 01182</b>	<b>M. W. Hayden</b>
<b>Calibration Due Date</b> <b>06/10/2023</b>	<b>Calibration Due Date</b> <b>06/12/2023</b>	

<b>Site</b>	<b>Coordinates</b>
<b>Jemez Springs NM</b>	<b>35.77806</b> <b>-106.68779</b>

<b>Comment</b>
<b>Measurement Location #7</b> <b>Jemez Historical Site (North)</b>



### Measured Values

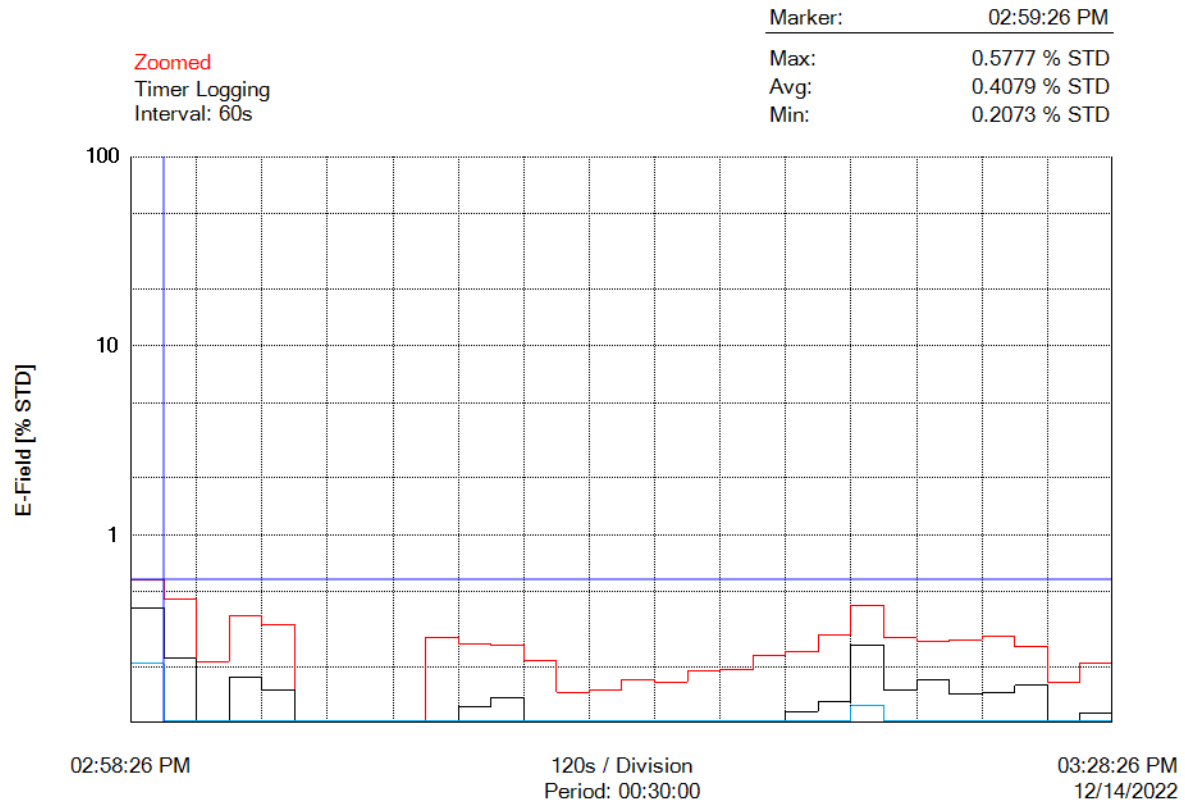
**Zoomed**

Timer: Start Time 02:58:26 PM, Period 0h 30' 0", Interval 60s

Index	Date/Time	Zero	Max (E-Field)	Avg (E-Field)	Min (E-Field)
1	12/14/2022 02:59:26 PM		0.5777 % STD	0.4079 % STD	0.2073 % STD
2	12/14/2022 03:00:26 PM		0.4562 % STD	0.2210 % STD	0.0415 % STD
3	12/14/2022 03:01:26 PM		0.2133 % STD	0.0842 % STD	0.0000 % STD
4	12/14/2022 03:02:26 PM		0.3732 % STD	0.1761 % STD	0.0059 % STD
5	12/14/2022 03:03:26 PM		0.3318 % STD	0.1512 % STD	0.0000 % STD
6	12/14/2022 03:04:26 PM		0.0770 % STD	0.0056 % STD	0.0000 % STD
7	12/14/2022 03:05:26 PM		0.0773 % STD	0.0116 % STD	0.0000 % STD
8	12/14/2022 03:06:26 PM		0.0884 % STD	0.0080 % STD	0.0000 % STD
9	12/14/2022 03:07:26 PM		0.0889 % STD	0.0075 % STD	0.0000 % STD
10	12/14/2022 03:08:26 PM		0.2870 % STD	0.0825 % STD	0.0000 % STD
11	12/14/2022 03:09:26 PM		0.2630 % STD	0.1234 % STD	0.0059 % STD
12	12/14/2022 03:10:26 PM		0.2587 % STD	0.1370 % STD	0.0178 % STD
13	12/14/2022 03:11:26 PM		0.2160 % STD	0.0833 % STD	0.0000 % STD
14	12/14/2022 03:12:26 PM	!	0.1464 % STD	0.0644 % STD	0.0000 % STD
15	12/14/2022 03:13:26 PM		0.1492 % STD	0.0760 % STD	0.0000 % STD
16	12/14/2022 03:14:26 PM		0.1713 % STD	0.0833 % STD	0.0000 % STD
17	12/14/2022 03:15:26 PM		0.1658 % STD	0.0841 % STD	0.0055 % STD
18	12/14/2022 03:16:26 PM		0.1890 % STD	0.0997 % STD	0.0000 % STD
19	12/14/2022 03:17:26 PM		0.1934 % STD	0.0942 % STD	0.0110 % STD
20	12/14/2022 03:18:26 PM		0.2301 % STD	0.1008 % STD	0.0000 % STD
21	12/14/2022 03:19:26 PM		0.2408 % STD	0.1159 % STD	0.0221 % STD
22	12/14/2022 03:20:26 PM		0.2934 % STD	0.1303 % STD	0.0332 % STD
23	12/14/2022 03:21:26 PM		0.4236 % STD	0.2611 % STD	0.1235 % STD
24	12/14/2022 03:22:26 PM		0.2828 % STD	0.1502 % STD	0.0608 % STD
25	12/14/2022 03:23:26 PM		0.2700 % STD	0.1714 % STD	0.0773 % STD
26	12/14/2022 03:24:26 PM		0.2775 % STD	0.1432 % STD	0.0553 % STD
27	12/14/2022 03:25:26 PM		0.2873 % STD	0.1448 % STD	0.0553 % STD
28	12/14/2022 03:26:26 PM		0.2542 % STD	0.1588 % STD	0.0829 % STD
29	12/14/2022 03:27:26 PM	!	0.1658 % STD	0.0911 % STD	0.0000 % STD
30	12/14/2022 03:28:26 PM		0.2100 % STD	0.1138 % STD	0.0110 % STD



### Graph







## Images

---





## Parameters

---

Operating Mode	HIGH FREQUENCY
Number of Sub-Indices	30
Storing Date	12/14/2022
Storing Time	02:58:26 PM
Dataset Type	TIM
Voice Comment Available	NO
Dataset Fine Type	T1
GPS Flag	NO
Device Product Name	NBM-550
Device Serial Number	F-0223
Device Cal Due Date	06/10/2023
Probe Product Name	EA5091
Probe Serial Number	01182
Probe Cal Due Date	06/12/2023
Probe Field Type	E
Probe Connection Type	C
Probe Lower Frequency Limit A	300 kHz
Probe Upper Frequency Limit A	50 GHz
Probe Lower Frequency Limit B	300 kHz
Probe Upper Frequency Limit B	50 GHz
Probe Emin A	4.340 V/m
Probe Emax A	150.0 V/m
Probe Emin B	4.340 V/m
Probe Emax B	150.0 V/m
Shaped Probe	YES
Standard ID	1
Standard Name	FCC96-326,occ
Apply Standard	OFF
Frequency	300 MHz
Apply Correction Frequency	OFF
Eref_E(f)	1.000 V/m
Eref_H(f)	1.000 V/m
Combi Probe Use	E_H
Unit	mW/cm <sup>2</sup>
Results Format	FIXED
Auto-Zero Interval	15 min
Result Type	-
Averaging Time	-
Average Progress	-
Spatial AVG Mode	-
Store Condition	-
Storing Range	-
Cond. Stop Time	-
Upper Threshold	-
Lower Threshold	-
Timer Interval	60 sec
Timer Duration	00:30:00
History Time Scale	-
Time progress of current segment	-



CORPORATE OFFICE  
326 TRYON ROAD  
RALEIGH, NC 27607  
919.661.6351  
WWW.TEPGROUP.NET

## Appendix 4h Measurement Data (Jemez Springs Domestic Water Co-Op)

This page intentionally blank



**Instrument / Site**

<b>Meter</b>	<b>Probe</b>	<b>Engineer</b>
<b>Model: NBM-550</b> <b>S/N: F-0223</b>	<b>Model: EA5091</b> <b>S/N: 01182</b>	<b>M. W. Hayden</b>
<b>Calibration Due Date</b> <b>06/10/2023</b>	<b>Calibration Due Date</b> <b>06/12/2023</b>	

<b>Site</b>	<b>Coordinates</b>
<b>Jemez Springs NM</b>	<b>35.76186</b> <b>-106.69784</b>

<b>Comment</b>
<b>Measurement Location #8</b> <b>Jemez Springs Domestic Water Co-Op (South)</b>

## Measured Values

---

### Zoomed

Timer: Start Time 03:37:40 PM, Period 0h 30' 0", Interval 60s

<b>Index</b>	<b>Date/Time</b>	<b>Zero</b>	<b>Max (E-Field)</b>	<b>Avg (E-Field)</b>	<b>Min (E-Field)</b>
1	12/14/2022 03:38:40 PM		1.025 % STD	0.7677 % STD	0.5212 % STD
2	12/14/2022 03:39:40 PM		1.018 % STD	0.8631 % STD	0.7167 % STD
3	12/14/2022 03:40:40 PM		0.8886 % STD	0.6938 % STD	0.4976 % STD
4	12/14/2022 03:41:40 PM		0.6931 % STD	0.5254 % STD	0.3968 % STD
5	12/14/2022 03:42:40 PM		0.6812 % STD	0.5390 % STD	0.3790 % STD
6	12/14/2022 03:43:40 PM		0.7050 % STD	0.5790 % STD	0.4562 % STD
7	12/14/2022 03:44:40 PM		0.8411 % STD	0.7046 % STD	0.5745 % STD
8	12/14/2022 03:45:40 PM		0.9419 % STD	0.7930 % STD	0.6753 % STD
9	12/14/2022 03:46:40 PM		1.055 % STD	0.8858 % STD	0.6873 % STD
10	12/14/2022 03:47:40 PM		1.090 % STD	0.9862 % STD	0.8706 % STD
11	12/14/2022 03:48:40 PM		1.084 % STD	0.8332 % STD	0.5390 % STD
12	12/14/2022 03:49:40 PM		0.9302 % STD	0.7145 % STD	0.5154 % STD
13	12/14/2022 03:50:40 PM		1.019 % STD	0.8808 % STD	0.7700 % STD
14	12/14/2022 03:51:40 PM	!	0.9361 % STD	0.8109 % STD	0.6549 % STD
15	12/14/2022 03:52:40 PM		0.9669 % STD	0.7374 % STD	0.6149 % STD
16	12/14/2022 03:53:40 PM		0.8111 % STD	0.6568 % STD	0.5080 % STD
17	12/14/2022 03:54:40 PM		0.6562 % STD	0.4987 % STD	0.3562 % STD
18	12/14/2022 03:55:40 PM		0.5942 % STD	0.4381 % STD	0.2950 % STD
19	12/14/2022 03:56:40 PM		0.7828 % STD	0.5953 % STD	0.4016 % STD
20	12/14/2022 03:57:40 PM		0.8740 % STD	0.7168 % STD	0.5613 % STD
21	12/14/2022 03:58:40 PM		0.7902 % STD	0.6558 % STD	0.5035 % STD
22	12/14/2022 03:59:40 PM		0.7658 % STD	0.5759 % STD	0.4265 % STD
23	12/14/2022 04:00:40 PM		0.6618 % STD	0.5205 % STD	0.3783 % STD
24	12/14/2022 04:01:40 PM		0.7796 % STD	0.5747 % STD	0.3722 % STD
25	12/14/2022 04:02:40 PM		0.7265 % STD	0.5672 % STD	0.3878 % STD
26	12/14/2022 04:03:40 PM		0.7265 % STD	0.5514 % STD	0.4013 % STD
27	12/14/2022 04:04:40 PM		0.7451 % STD	0.5960 % STD	0.4247 % STD
28	12/14/2022 04:05:40 PM		0.8605 % STD	0.6934 % STD	0.5414 % STD
29	12/14/2022 04:06:40 PM	!	1.006 % STD	0.7961 % STD	0.5783 % STD
30	12/14/2022 04:07:40 PM		1.029 % STD	0.8782 % STD	0.7361 % STD







## Images





## Parameters

---

<i>Operating Mode</i>	<i>HIGH FREQUENCY</i>
<i>Number of Sub Indices</i>	30
<i>Storing Date</i>	12/14/2022
<i>Storing Time</i>	03:37:40 PM
<i>Dataset Type</i>	TIM
<i>Voice Comment Available</i>	NO
<i>Dataset Fine Type</i>	T1
<i>GPS Flag</i>	NO
<i>Device Product Name</i>	NBM-550
<i>Device Serial Number</i>	F-0223
<i>Device Cal Due Date</i>	06/10/2023
<i>Probe Product Name</i>	EA5091
<i>Probe Serial Number</i>	01182
<i>Probe Cal Due Date</i>	06/12/2023
<i>Probe Field Type</i>	E
<i>Probe Connection Type</i>	C
<i>Probe Lower Frequency Limit A</i>	300 kHz
<i>Probe Upper Frequency Limit A</i>	50 GHz
<i>Probe Lower Frequency Limit B</i>	300 kHz
<i>Probe Upper Frequency Limit B</i>	50 GHz
<i>Probe Emin A</i>	4.340 V/m
<i>Probe Emax A</i>	150.0 V/m
<i>Probe Emin B</i>	4.340 V/m
<i>Probe Emax B</i>	150.0 V/m
<i>Shaped Probe</i>	YES
<i>Standard ID</i>	1
<i>Standard Name</i>	FCC96-326,occ
<i>Apply Standard</i>	OFF
<i>Frequency</i>	300 MHz
<i>Apply Correction Frequency</i>	OFF
<i>Eref_E(f)</i>	1.000 V/m
<i>Eref_H(f)</i>	1.000 V/m
<i>Combi Probe Use</i>	E_H
<i>Unit</i>	mW/cm <sup>2</sup>
<i>Results Format</i>	FIXED
<i>Auto-Zero Interval</i>	15 min
<i>Result Type</i>	-
<i>Averaging Time</i>	-
<i>Average Progress</i>	-
<i>Spatial AVG Mode</i>	-
<i>Store Condition</i>	-
<i>Storing Range</i>	-
<i>Cond. Stop Time</i>	-
<i>Upper Threshold</i>	-
<i>Lower Threshold</i>	-
<i>Timer Interval</i>	60 sec
<i>Timer Duration</i>	00:30:00
<i>History Time Scale</i>	-
<i>Time progress of current segment</i>	-